



**HYDROMASTER**

pioneers of steerable propulsion

At Hydromaster  
we have over 60  
years of experience  
in the design  
and manufacture  
of 360-degree  
steerable marine  
propulsion systems.





# Hydromaster

Originating during the 1930s, steerable thrusters were first operated on a grand scale to propel assault barges deployed in the Pacific, during D-Day installed on ferries to reach Normandy and later on pontoons to cross rivers in mainland Europe. In the early 1950s a license was issued to the UK, from which Hydromaster was born. The original Hydromaster, valued for its robust fully mechanical design, simplicity and durability, still works every day on hundreds of ferries, barges and pontoons worldwide. As well as maintaining the original design, we continue to build on this revolutionary technology by investing in innovative solutions and applying the latest insights and technologies. Our ultimate goal is to provide our clients with the best possible propulsion solutions.

## Markets & Applications

Hydromaster propulsion units are in operation worldwide propelling a wide variety of applications such as tugs, ferries, floating cranes, coastal vessels, inland river barges and specialised military craft.

Our customer base includes governments, armed forces, port, dock and harbour authorities, construction and industrial companies, shipyards and vessel builders. We strive to work closely together with our clients to work out the best solution for their specific application and environment.

From remote locations with no support facilities to the demanding environments of marine contractors and armed forces, Hydromaster systems work continuously transporting people and vehicles across rivers and lakes, effortlessly serving our clients to propel their business.



# Products

Hydromaster 360-degree steerable thrusters are available as well mounted, deck mounted and through hull versions. In Z and L drive configurations with electric or hydraulic steering. The units can be driven by different power sources and supplied as a full propulsion package complete with diesel engine, electric or hydraulic drive systems. Hydromaster propulsion units are available in a power range of 50 to 1000 kW and meet the requirements of all major classification societies.



## Well Mounted

Azimuth thrusters available in L or Z drive configurations, electric, diesel or hydraulic driven, with open or ducted propeller.



## Deck Mounted

Fully self-contained outboard propulsion units fitted with prime mover at choice. Propeller is depth adjustable and can be tilted upward for easy maintenance.



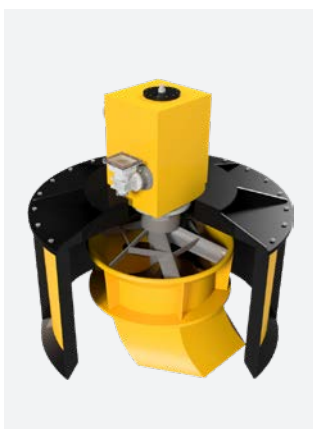
## Transom Mounted

Combines an inboard engine room with an outboard thruster, with automatic clamping steady bracket allowing the thruster to be tilted for easy maintenance.



## Retractable

Used for auxiliary propulsion or for station keeping purposes on DP vessels, L or Z drive, available with all drive systems.



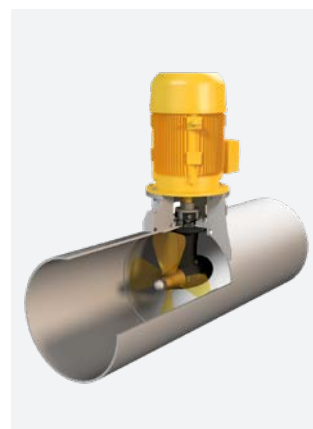
## Steerable Jet

Flush mounted with vessel baseline, the steerable jet offers 360 degree maneuverability in shallow draught condition.



## High Speed

Combining a pulling type propeller with an optimised and highly streamlined underwater body shape, propelling fast craft up to 28 knots. In L or Z drive.



## Tunnel

Transverse stern and bow tunnel thrusters with steel or aluminium tunnel offering maximum side thrust.



## Swing-type

Non-steerable thruster stored inside hull when not in use, fitted with nozzle to offer maximum thrust.

Operating in the most challenging conditions and remote locations, the Hydromaster propulsion units provide **exceptional reliability** and a typical lifespan in excess of 20 years.





Our depth of knowledge and wealth of experience in this specialised area of marine engineering has propelled Hydromaster to become the preferred supplier of steerable propulsion units for **electric and hybrid** applications.





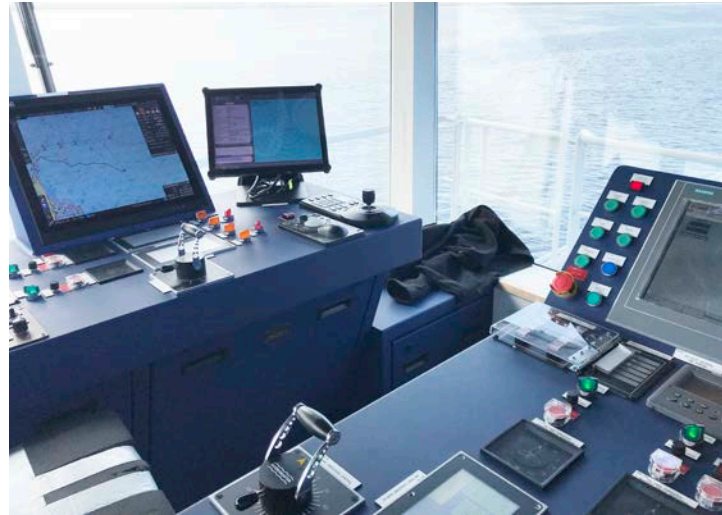
# Electric Propulsion

Electric driven propulsion systems offer a precise thrust control over full speed range and can be optimised for higher efficiency at specific duty cycles and operation profiles. It allows for smart power management and load sharing. This improves redundancy and can be designed with battery banks to allow for peak shaving and has the advantage of a centralised engine room that contributes to ease of installation. Hydromaster provides complete propulsion packages for diesel-electric, hybrid or full electric propelled ships. The propulsion packages come in conjunction with an electric motor, asynchronous or permanent magnet, drives and drive associated control systems.

## Control Systems

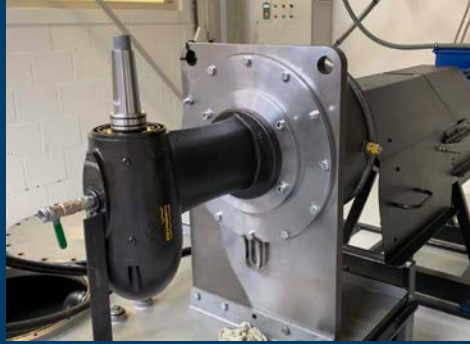
A modular, processor controlled, classification type-approved control system with LCD touch screen for monitoring & alarms. Mounted in a console with optionally plug-in connector cables for our deck mounted propulsion units. Drop-in panels are tailor made to your needs or loose components to suit your wheelhouse console. The full follow-up steering control system can be repeated at multiple stations and can interface with external navigational systems like autopilot and dynamic positioning systems, integrated propulsion management systems and/or data recording systems.

If the application does not require such a level of sophistication, Hydromaster can still offer a locally mounted steering wheel hydraulically power assisted with an automatic mechanical backup. This again emphasises our policy to provide the customer with what they need, using smart, cost effective designs and builds.



## Testing

The propulsion units are fully factory tested before shipment ensuring a trouble-free and easy installation.



## Quality

Hydromaster units are designed and built to a heavy duty specification using the highest grade materials and components in accordance with the latest ISO 9001 standard.



## R&D

Using the latest software, calculation tools and technology enables us to provide our clients with the best available innovative solutions.



## Service

Hydromaster supports and services its products worldwide. Directly from the Netherlands, United Kingdom, Singapore or from one of our many sales & service agents.



Hydromaster Propulsion B.V.  
Rotterdam · The Netherlands  
☎ +31 15 76 30 560

Sykes Marine (Hydromaster) Ltd.  
Southend-on-Sea · United Kingdom  
☎ +44 1780 862 651

Hydromaster Far East Pte Ltd.  
Singapore  
☎ +65 6901 4722

✉ [info@hydromasterpropulsion.com](mailto:info@hydromasterpropulsion.com)

💻 [www.hydromasterpropulsion.com](http://www.hydromasterpropulsion.com)